

Fund Objective

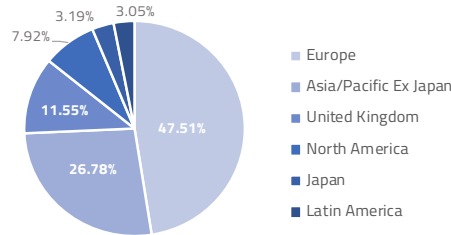
The Shelton International Select Equity Fund seeks to achieve long-term capital appreciation.

Strategic Overview

The fund seeks to achieve long-term capital appreciation by investing in a concentrated portfolio of 30-50 stocks using a proprietary process that focuses on identifying companies that generate superior and consistent internal returns on capital in order to create shareholder value. The fund invests primarily in mid-to-large cap foreign equity securities.

Region Allocations²

Europe	47.51%
Asia/Pacific Ex Japan	26.78%
Japan	11.55%
North America	7.92%
United Kingdom	3.19%
Latin America	3.05%



Average Annual Total Returns

	4Q	YTD	1YR	3YR	Inception*
SISEX	6.38%	22.53%	22.53%	12.91%	11.20%
SISLX	6.31%	22.25%	22.25%	12.62%	10.94%
MSCI ACWI Ex USA	8.92%	21.51%	21.51%	9.87%	9.22%

All performance figures reflect an expense reimbursement. Without the expense reimbursement, the performance figures would be lower. Performance figures represent past performance and are not a guarantee of future results. The investment return and the principal value of an investment will fluctuate so that an investor's shares, when redeemed, may be worth more or less than their original cost; current performance may be lower or higher than the performance data quoted. For more current month-end Fund performance information, please call our office at (800) 955-9988.

*Performance inception date: 07/18/16

Sector Diversification ^{2,3}	Shelton International Select Equity Fund	MSCI ACWI EX US	0 - Index
Communication Services	0.00%	6.56%	0
Consumer Discretionary	6.52%	11.99%	0
Consumer Staples	10.07%	9.43%	0
Energy	4.82%	6.52%	0
Financials	29.17%	21.38%	0
Health Care	3.35%	8.86%	0
Industrials	25.48%	12.08%	0
Information Technology	14.63%	9.38%	0
Materials	5.96%	7.21%	0
Real Estate	0.00%	3.19%	0
Utilities	0.00%	3.41%	0

Fund Information

	Share Price	Gross Expense Ratio	Net Expense Ratio
SISEX	\$22.02	1.36%	0.99%
SISLX	\$21.91	1.56%	1.24%

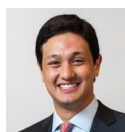
Shelton Capital Management contractually reimburses expenses to the extent total annual fund operating expenses exceed the net expense ratio until 5/1/20.

Portfolio Management Team



Andrew Manton, Portfolio Manager

Andrew is the Portfolio Manager of the Shelton International Select Equity Strategy. He has over 20 years of industry experience and over 10 years investing in international markets. Andrew earned his B.S. in Finance from University of Illinois at Chicago, and a MBA with a concentration in quantitative finance and accounting from the Tepper School of Business at Carnegie Mellon University.



Jonathan Katzman, Research Analyst

Jonathan is a Research Analyst for the Shelton International Select Equity Strategy. Prior to joining Shelton Capital, he worked as an analyst at PNC Bank's Asset Management Group and held positions in Hong Kong with Morgan Stanley and Tree Line Investment Management. Jonathan earned his B.A. with honors from Dartmouth College.



Abheek Bhattachayra, Research Analyst

Abheek is a Research Analyst for the Shelton International Select Equity Strategy. Prior to joining Shelton Capital, he worked in research analyst roles for both Firefly Value Partners and Davis Selected Advisers. Prior to that, Abheek worked as a journalist at the Wall Street Journal's Hong Kong bureau and one of their former affiliate papers in India. Abheek earned a B.A. with Distinction from Yale University as well as an MBA from Columbia Business School.

Overall Morningstar RatingTM



The Shelton International Select Equity Fund received a Morningstar RatingTM of 5 stars among 629 funds in the Foreign Large Blend category based on risk adjusted returns as of 12/31/2019.

Portfolio Characteristics¹

Beta*	0.97
R-squared*	0.806
Information Ratio*	0.157
Sharpe Ratio*	2.00
Standard Deviation*	10.92%
Price/Earnings	18.90
Price/Book Value	2.60
Avg. Dividend Yield	2.63%
Avg. Market Cap (in millions)	\$77,413
Number of Holdings	37

*Risk statistics are based on Institutional shares (SISEX) at net asset value in comparison to the benchmark for a one-year period. Excludes cash and cash equivalents.

Portfolio Details

Net Assets	\$60m
Benchmark	MSCI ACWI Ex US
Morningstar Category	Foreign Large Blend

Top Ten Holdings²

Taiwan Semiconductor Manufacturing Co., Ltd.	4.37%
AIA Group Limited	4.37%
ASML Holding NV	4.07%
DBS Group Holdings Ltd	3.78%
PT Bank Rakyat Indonesia (Persero) Tbk Class B	3.78%
Itochu Corporation	3.43%
CRH Plc	3.42%
Bangkok Bank Public Company Limited	3.35%
Element Fleet Management Corporation	3.28%
Intertek Group plc	3.19%

DEFINITIONS AND IMPORTANT INFORMATION

Beta: Beta measures the fund's sensitivity to market movements as defined by its benchmark; beta greater than 1 is more volatile than the market, while beta less than 1 is less volatile than the market.

R-squared: R-squared represents the percentage of the fund's movements that can be explained by movements in its benchmark.

Information Ratio: Information Ratio is a ratio of the fund's returns above those of its benchmark compared to the volatility of those returns.

Sharpe Ratio: Average return earned in excess of the risk-free rate per unit of volatility or total risk.

Standard deviation: Standard Deviation measures the volatility of the Fund's returns; higher deviation represents higher volatility.

Shelton Capital Management is the Fund's advisor. Shelton Capital Management has served as the investment advisor and administrator to the Shelton Funds since 1985.

1 Source: Bloomberg.

2 Source: Bloomberg. Sector and country allocations and top ten holdings percentages are based on the total portfolio as of quarter-end. Portfolio holdings are subject to change. Excludes cash and cash equivalents.

3 Source: Bloomberg. Sector classifications are based on the Global Industry Classification Standards (GICS®) developed by MSCI and Standard & Poor's (S&P).

Investors should consider a fund's investment objectives, risks, charges and expenses carefully before investing. The prospectus contains this and other information about the fund. To obtain a prospectus, visit www.sheltoncap.com or call (800) 955-9988. A prospectus should be read carefully before investing.

Distributed by RFS Partners, a member of FINRA, and affiliate of Shelton Capital Management.

INVESTMENTS ARE NOT FDIC INSURED OR BANK GUARANTEED AND MAY LOSE VALUE

© 2019 Morningstar, Inc. All rights reserved. The information contained herein: (1) is proprietary to Morningstar and/or its content providers; (2) may not be copied or distributed; and (3) is not warranted to be accurate, complete, or timely. Neither Morningstar nor its content providers are responsible for any damages or losses arising from any use of this information.

The Morningstar Rating™ for funds, or “star rating”, is calculated for managed products (including mutual funds, variable annuity and variable life subaccounts, exchange-traded funds, closed-end funds, and separate accounts) with at least a three-year history. Exchange-traded funds and open-ended mutual funds are considered a single population for comparative purposes. It is calculated based on a Morningstar Risk-Adjusted Return measure that accounts for variation in a managed product’s monthly excess performance, placing more emphasis on downward variations and rewarding consistent performance. The top 10% of products in each product category receive 5 stars, the next 22.5% receive 4 stars, the next 35% receive 3 stars, the next 22.5% receive 2 stars, and the bottom 10% receive 1 star. The Overall Morningstar Rating for a managed product is derived from a weighted average of the performance figures associated with its three-, five-, and 10-year (if applicable) Morningstar Rating metrics. The weights are: 100% three-year rating for 36-59 months of total returns, 60% five-year rating/40% three-year rating for 60-119 months of total returns, and 50% 10-year rating/30% five-year rating/20% three-year rating for 120 or more months of total returns. While the 10-year overall star rating formula seems to give the most weight to the 10-year period, the most recent three-year period actually has the greatest impact because it is included in all three rating periods. The Shelton International Select Equity Fund was rated against the following numbers of Foreign Large Blend category funds over the following time periods: 5 stars for the 3-year period out of 629 funds ending 12/31/19.



For more information, visit www.sheltoncap.com